

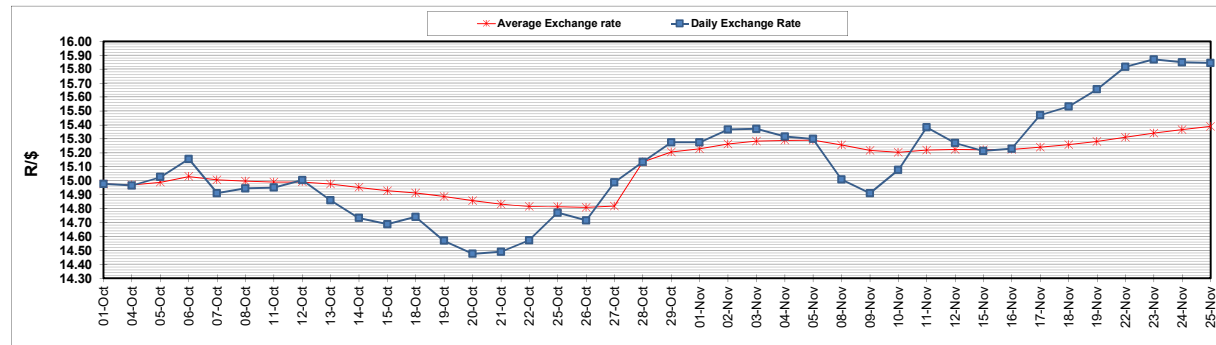
	PETROL 95 ULP	PETROL 93 ULP & LRP	DIESEL 0.05%	DIESEL 0.005%	ILL. PAR.
GAUTENG PUMP PRICE (SA c/l) AS FROM 03/11/2021	1,954.000	1,932.000	-	-	-
WHOLESALE PRICE (SA c/l) AS FROM 03/11/2021	-	-	1,719.980	1,723.380	1,125.488
SINGLE NATIONAL MAXIMUM RETAIL PRICE	-	-	-	-	1,433.000
BASIC FUEL PRICE - 25/11/2021 (SA c/l)	942.679	926.689	939.518	946.084	932.615
PRESS RELEASE CONTRIBUTION TO BFP 03/11/2021 - 25/11/2021 (SA c/l)	937.110	925.110	917.630	921.030	912.128
UNIT OVER/(UNDER) RECOVERY - 25/11/2021 (SA c/l)	(5.569)	(1.579)	(21.888)	(25.054)	(20.487)
AVERAGE BASIC FUEL PRICE 28/10/2021 - 25/11/2021	951.369	932.977	927.288	933.194	918.412
AVERAGE UNIT OVER/(UNDER) RECOVERY 28/10/2021 - 25/11/2021	(36.888)	(30.497)	(37.468)	(39.974)	(33.903)

ANALYSIS MOVEMENT OF AVERAGE OVER/(UNDER) RECOVERY

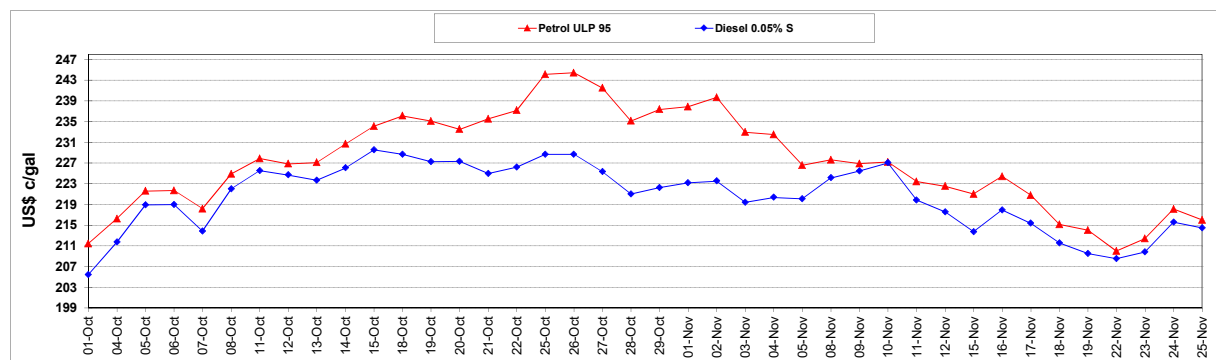
	PETROL 95	PETROL 93	DIESEL 0.05%	DIESEL 0.005%	ILL. PAR.
- MOVEMENT IN INTERNATIONAL PRODUCT PRICES	(1.551)	4.158	(3.026)	(5.312)	0.210
- MOVEMENT IN EXCHANGE RATE	(35.337)	(34.654)	(34.442)	(34.662)	(34.113)
AVERAGE UNIT OVER/(UNDER) RECOVERY 28/10/2021 - 25/11/2021	(36.888)	(30.497)	(37.468)	(39.974)	(33.903)

R/\$ EXCHANGE RATE - (R/\$15.8450 - 25/11/2021)

EXCHANGE RATE USED IN BASIC FUEL PRICE



INTERNATIONAL PRODUCT PRICES OF BASKET USED IN BASIC FUEL PRICE



BASIC FUEL PRICE IN SA CENTS PER LITRE

